

## Education

### Labral Tear of the Shoulder

#### What is a labral tear?

The shoulder joint is a ball-and-socket joint. The socket of the shoulder blade holds the ball of the upper arm bone. The socket is called the glenoid. The labrum is a lip of connective tissue located where the shoulder ligaments, which make up the joint capsule, connect to the edge of the socket. Ligaments are strong bands of tissue that attach bone to bone, helping to hold the ball in the socket. The tendon of the biceps muscle in the upper arm attaches to the shoulder just above the labrum. A tear in the labrum can occur during a shoulder or arm injury.

#### How does it occur?

The labrum can be torn by:

- dislocating your shoulder
- falling onto your arm
- a forced movement of your arm or shoulder
- using your arm to break a fall
- lifting a heavy object
- use of your shoulder in sports with a repetitive, high velocity overhead movement, such as throwing a ball or serving in tennis.

#### What are the symptoms?

The symptoms of a labral tear are:

- arm and shoulder pain
- arm and shoulder weakness
- painful overhead movements of the shoulder
- clicking or grinding sounds or sensations when you move your shoulder.

#### How is it diagnosed?

Your health care provider will check your shoulder for pain, tenderness, loss of motion, or joint looseness as you move your arm in all directions. He or she will ask if your shoulder pain began suddenly or gradually. You may have an x-ray to see if there are any fractures in the shoulder.

Your health care provider may recommend that you get an MRI (magnetic resonance imaging) of your shoulder. An MRI is a special scan that shows bone, ligaments, cartilage, and muscle. The MRI may be done with an arthrogram. In an arthrogram, a special dye is injected into the shoulder to outline the structures within the joint, providing a better look at the labrum and other shoulder structures.

You may have an arthroscopy, a surgical procedure in which a small fiber-optic scope is inserted into your shoulder joint so your doctor can see all the structures in your shoulder. Many times, labral tears are finally diagnosed when arthroscopy is performed to look inside a shoulder that has persistently caused pain and other symptoms.

#### How is it treated?

At first treatment may include:

- putting ice packs on your shoulder for 20 to 30 minutes 3 to 4 times a day
- taking anti-inflammatory medicines such as ibuprofen
- doing shoulder rehabilitation exercises.

Large labral tears usually need to be fixed in surgery. The tear in the labrum may be repaired or the torn parts trimmed away. Any scar tissue may be removed. If you have torn shoulder ligaments, they may be reattached. If you have a small labral tear you may choose to avoid activities that cause shoulder pain rather than have surgery.

How long will the effects last?

Pain from labral tears of the shoulder may last a long time. The pain can periodically go away but then come back with certain movements of the shoulder. Symptoms may last until the torn labrum is fixed with surgery.

When can I return to my normal activities?

Everyone recovers from an injury at a different rate. Return to your activities will be determined by how soon your shoulder recovers, not by how many days or weeks it has been since your injury has occurred. In general, the longer you have symptoms before you start treatment, the longer it will take to get better. The goal of rehabilitation is to return you to your normal activities as soon as is safely possible. If you return too soon you may worsen your injury.

You may safely return to your normal activities when:

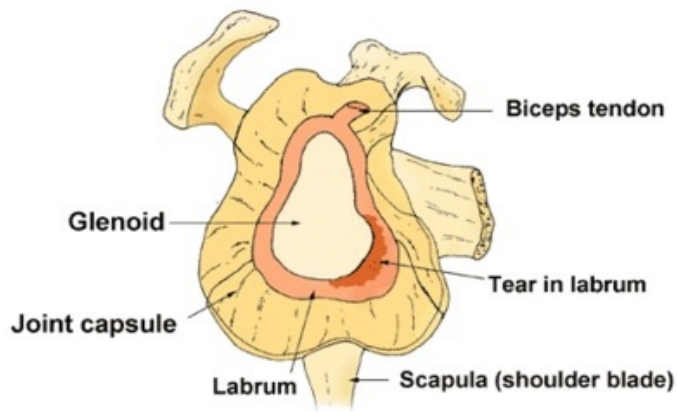
- your injured shoulder has full range of motion without pain
- your injured shoulder has regained normal strength compared to the uninjured shoulder.

How can I prevent a labral tear?

Many labral tears are caused by accidents that cannot be prevented. However, it is important to use good form while throwing, playing racquet sports, or lifting heavy objects.

*Sports Medicine Advisor 2006.4; Copyright © 2006 McKesson Corporation and/or one of its subsidiaries. All Rights Reserved. Written by Pierre Rouzier, M.D., for McKesson Provider Technologies This content is reviewed periodically and is subject to change as new health information becomes available. The information is intended to inform and educate and is not a replacement for medical evaluation, advice, diagnosis or treatment by a healthcare professional.*

# Labral Tear



Side view of shoulder joint with upper arm bone removed

